



The Global Language of Business

# Warehousing Operations Instruction and Notification Business Message Standard (BMS)

*Release 3.6, Ratified, Mar 2023*



## Document Summary

Document Item	Current Value
Document Name	Warehousing Operations Instruction and Notification Business Message Standard (BMS)
Document Date	Mar 2023
Document Version	3.6
Document Issue	1
Document Status	Ratified

## Work Request Reference

Date of WR Submission to GSMP:	WR Submitter(s):	Refer to Work Request (WR) Number(s):
25-Jun-2014	GS1 Global Office	14-000110
03-Oct-2018	GS1 GO	18-000319

## Business Requirements Document (BRAD) Reference

BRAD Title	BRAD Issue Date	BRAD Version
Warehousing Inventory Management	September 2012	1.0

## Document Change History

Date of Change	Version	Changed By	Reason for Change	Summary of Change
12-Jan-2012	BMS 3.0 – Issue 1	Mark Van Eeghem	BMS Release 3.0	See summary of changes
01-May-2013	BMS 3.1 – Issue 1	Coen Janssen	BMS Release 3.1	See summary of changes
15-Sep-2014	BMS 3.2 – Issue 1	Ewa Iwicka	BMS Release 3.2	See summary of changes
01-Mar-2017	BMS 3.3 – Issue 1	Ewa Iwicka	BMS Release 3.3	See summary of changes
15-Oct-2018	BMS 3.4 – Issue 1	Ewa Iwicka	BMS Release 3.4	See summary of changes
03-Feb-2021	BMS 3.5 – Issue 1	Miklos Bolyky	BMS Release 3.5	See summary of changes
05-Jan-2022	BMS 3.5.1 – Issue 1	Miklos Bolyky	BMS Release 3.5.1	See summary of changes
01-Mar-2023	BMS 3.6 – Issue 1	Miklos Bolyky	BMS Release 3.6	See summary of changes



## Disclaimer

GS1®, under its IP Policy, seeks to avoid uncertainty regarding intellectual property claims by requiring the participants in the Work Group that developed this **Warehousing Operations Instruction and Notification Business Message Standard (BMS)** to agree to grant to GS1 members a royalty-free licence or a RAND licence to Necessary Claims, as that term is defined in the GS1 IP Policy. Furthermore, attention is drawn to the possibility that an implementation of one or more features of this Specification may be the subject of a patent or other intellectual property right that does not involve a Necessary Claim. Any such patent or other intellectual property right is not subject to the licencing obligations of GS1. Moreover, the agreement to grant licences provided under the GS1 IP Policy does not include IP rights and any claims of third parties who were not participants in the Work Group.

Accordingly, GS1 recommends that any organization developing an implementation designed to be in conformance with this Specification should determine whether there are any patents that may encompass a specific implementation that the organisation is developing in compliance with the Specification and whether a licence under a patent or other intellectual property right is needed. Such a determination of a need for licencing should be made in view of the details of the specific system designed by the organisation in consultation with their own patent counsel.

THIS DOCUMENT IS PROVIDED "AS IS" WITH NO WARRANTIES WHATSOEVER, INCLUDING ANY WARRANTY OF MERCHANTABILITY, NONINFRINGEMENT, FITNESS FOR PARTICULAR PURPOSE, OR ANY WARRANTY OTHERWISE ARISING OUT OF THIS SPECIFICATION. GS1 disclaims all liability for any damages arising from use or misuse of this Standard, whether special, indirect, consequential, or compensatory damages, and including liability for infringement of any intellectual property rights, relating to use of information in or reliance upon this document.

GS1 retains the right to make changes to this document at any time, without notice. GS1 makes no warranty for the use of this document and assumes no responsibility for any errors which may appear in the document, nor does it make a commitment to update the information contained herein.

GS1 and the GS1 logo are registered trademarks of GS1 AISBL.



# Table of Contents

- 1 Business Domain View ..... 5**
  - 1.1 Introduction ..... 5
  - 1.2 References ..... 5
- 2 Business Context ..... 5**
- 3 Business Transaction View ..... 6**
  - 3.1 Business Transaction – Issue Operations Instruction ..... 6
  - 3.2 Business Transaction – Issue Operations Notification ..... 7
- 4 Business Information View ..... 9**
  - 4.1 Warehousing Operations Instruction ..... 9
  - 4.2 Warehousing Operations Notification ..... 11
  - 4.3 Warehousing Operations Common – Transaction ..... 13
    - 4.3.1 Warehousing Operations Common – WarehousingOperationsTransaction ..... 13
  - 4.4 Enumerations (message specific) ..... 15
  - 4.5 Code Lists ..... 15
- 5 Business Message Examples ..... 15**
  - 5.1 Example 1 ..... 15
  - 5.2 Example 2 ..... 16
- 6 Implementation Considerations ..... 17**
  - 6.1 User Guide ..... 17
  - 6.2 Message Specific Considerations ..... 17
- 7 Summary of Changes ..... 18**
  - 7.1 BMS Release 3.1 ..... 18
  - 7.2 BMS Release 3.2 ..... 18
  - 7.3 BMS Release 3.3 ..... 19
  - 7.4 BMS Release 3.4 ..... 19
  - 7.5 BMS Release 3.5 ..... 19
  - 7.6 BMS Release 3.5.1 ..... 19
  - 7.7 BMS Release 3.6 ..... 19
- 8 Appendices ..... 20**
- 9 Acknowledgements ..... 20**
  - 9.1.1 Work Group ..... 20
  - 9.1.2 Development Team Members ..... 21

# 1 Business Domain View

## 1.1 Introduction

### Message Definition

#### Warehousing Operations Instruction Message Definition

The Warehousing Operations Instruction message supports the inventory management process, and enables a Logistic Services Client (LSC) to inform his Logistic Services Provider (LSP) that the inventory status of goods needs to be changed.

#### Warehousing Operations Notification Message Definition

The Warehousing Operations Notification message supports the inventory management process, and enables a Logistic Services Provider (LSP) to inform his Logistic Services Client (LSC) that the inventory status of goods has been changed.

### Principles

These messages support the warehouse operations process.

## 1.2 References

[LIM] GS1 Logistics Interoperability Model, 1.0, GS1 2007

[BRAD\_WIO] BRAD Warehousing Inventory Management, 1.0, GS1 2012

[BMS\_Shared] BMS Shared Common Library, 3.6, GS1 2023

[BMS\_eCom] BMS eCom Common Library, 3.6, GS1 2023

[BMS\_Warehousing] BMS Warehousing Common Library, 3.6, GS1 2022

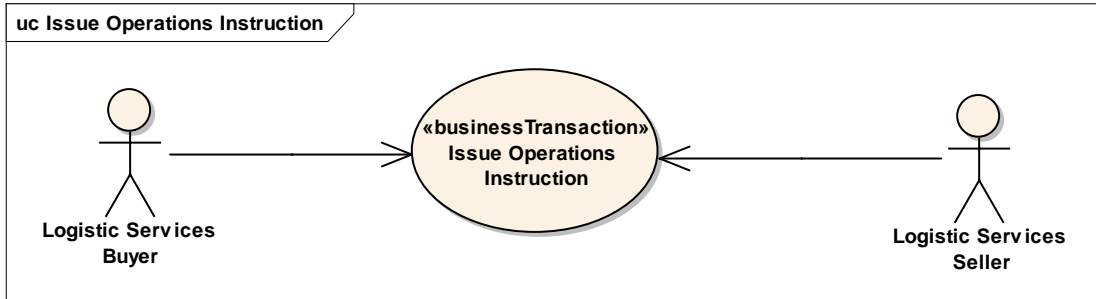
# 2 Business Context

Context Category	Value(s)
Industry	All
Geopolitical	All
Product	All
Process	Warehousing – Inventory Management Operations
System Capabilities	GS1 System
Official Constraints	None

### 3 Business Transaction View

#### 3.1 Business Transaction – Issue Operations Instruction

##### Use case diagram



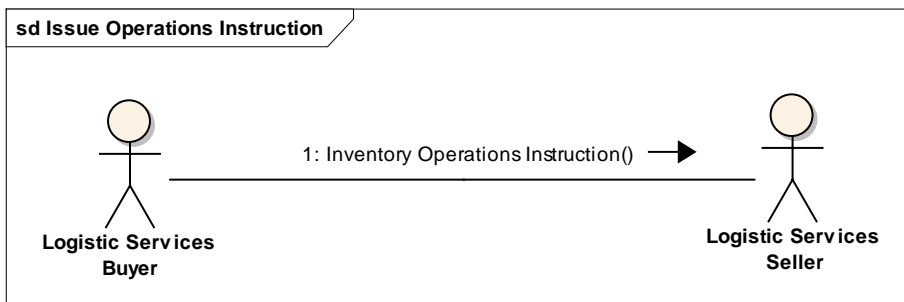
##### Use case description

<b>Use Case Name</b>	Issue Warehousing Operations Instruction
<b>Use Case Description</b>	The Logistic Services Buyer (LSB) informs the Logistic Services Seller (LSS) that inventory management operations need to be carried out.
<b>Actors (Goal)</b>	Logistic Services Buyer (LSB) Logistic Services Seller (LSS)
<b>Performance Goals</b>	Not applicable
<b>Preconditions</b>	Item master data of the goods been communicated to the Logistic Services Seller.
<b>Post conditions</b>	The Logistic Services Seller has been informed on the operations to be performed.
<b>Main Scenario</b>	<ul style="list-style-type: none"> <li>■ LSB generates the Warehousing Operations Instruction from his (enterprise resource planning) system.</li> <li>■ LSB sends the Warehousing Operations Instruction to the LSS.</li> <li>■ LSS receives the Warehousing Operations Instruction.</li> <li>■ LSS processes the Warehousing Operations Instruction in his (warehouse management) system.</li> </ul>
<b>Alternative Scenario(s)</b>	<u>&lt;&lt;scenario name&gt;&gt;</u> steps

##### Activity diagram

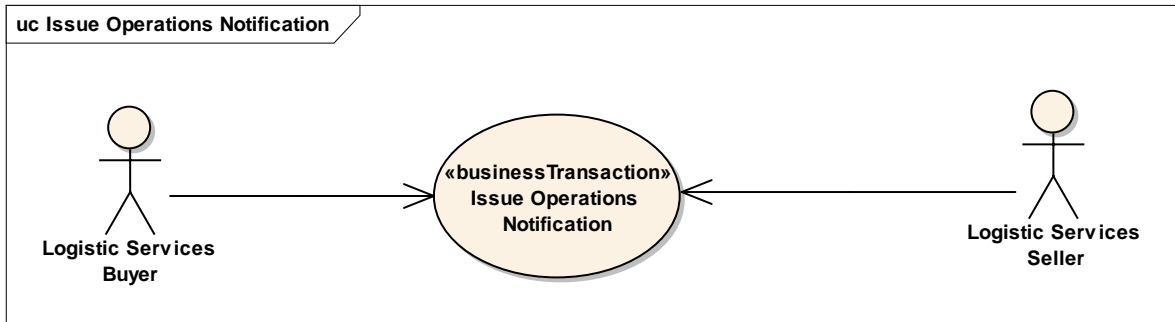
Not applicable

##### Communication diagram



### 3.2 Business Transaction – Issue Operations Notification

#### Use case diagram



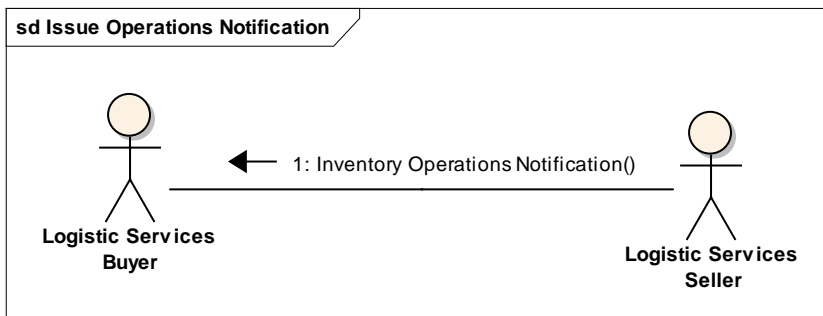
#### Use case description

<b>Use Case Name</b>	Issue Warehousing Operations Notification
<b>Use Case Description</b>	The Logistic Services Seller (LSS) informs the Logistic Services Buyer (LSB) on the status of inventory management operations that have been carried out.
<b>Actors (Goal)</b>	Logistic Services Buyer (LSB) Logistic Services Seller (LSS)
<b>Performance Goals</b>	Not applicable
<b>Preconditions</b>	<ul style="list-style-type: none"> <li>The Logistic Services Seller has been informed on the goods to be shipped.</li> </ul>
<b>Post conditions</b>	The Logistic Services Buyer has been informed on the status of the Operations shipment.
<b>Main Scenario</b>	<ul style="list-style-type: none"> <li>LSS generates the Warehousing Operations Notification from his (warehouse management) system.</li> <li>LSS sends the Warehousing Operations Notification to the LSB.</li> <li>LSB receives the Warehousing Operations Notification.</li> <li>LSB processes the Warehousing Operations Notification in his (enterprise resource planning) system.</li> </ul>
<b>Alternative Scenario(s)</b>	Not applicable

#### Activity diagram

Not applicable

#### Communication diagram



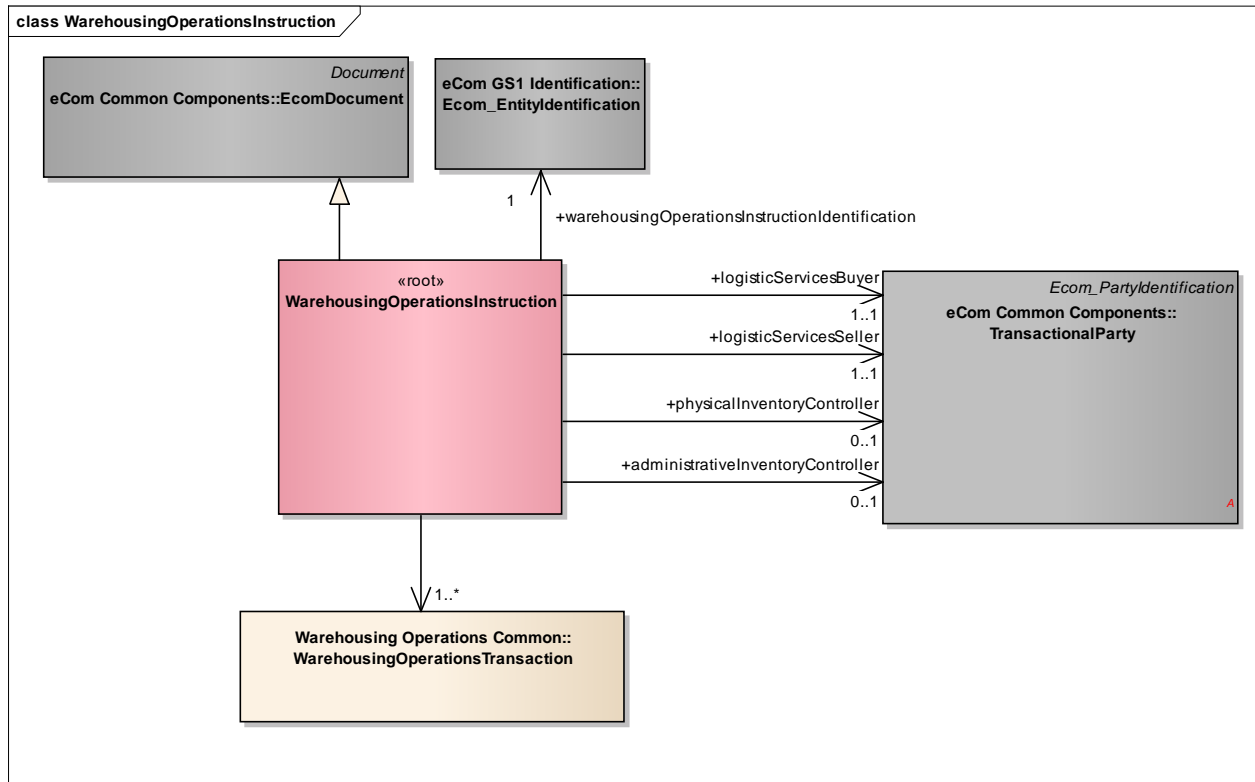




## 4 Business Information View

### 4.1 Warehousing Operations Instruction

#### Class diagram



### GDD report

The content of the WarehousingOperationsInstruction class, its structure and component definitions can be accessed in the Global Data Dictionary: [http://apps.gs1.org/GDD/bms/Version3\\_4/Pages/bieDetails.aspx?semanticURN=urn:gs1:gdd:bie:WarehousingOperationsInstruction](http://apps.gs1.org/GDD/bms/Version3_4/Pages/bieDetails.aspx?semanticURN=urn:gs1:gdd:bie:WarehousingOperationsInstruction)

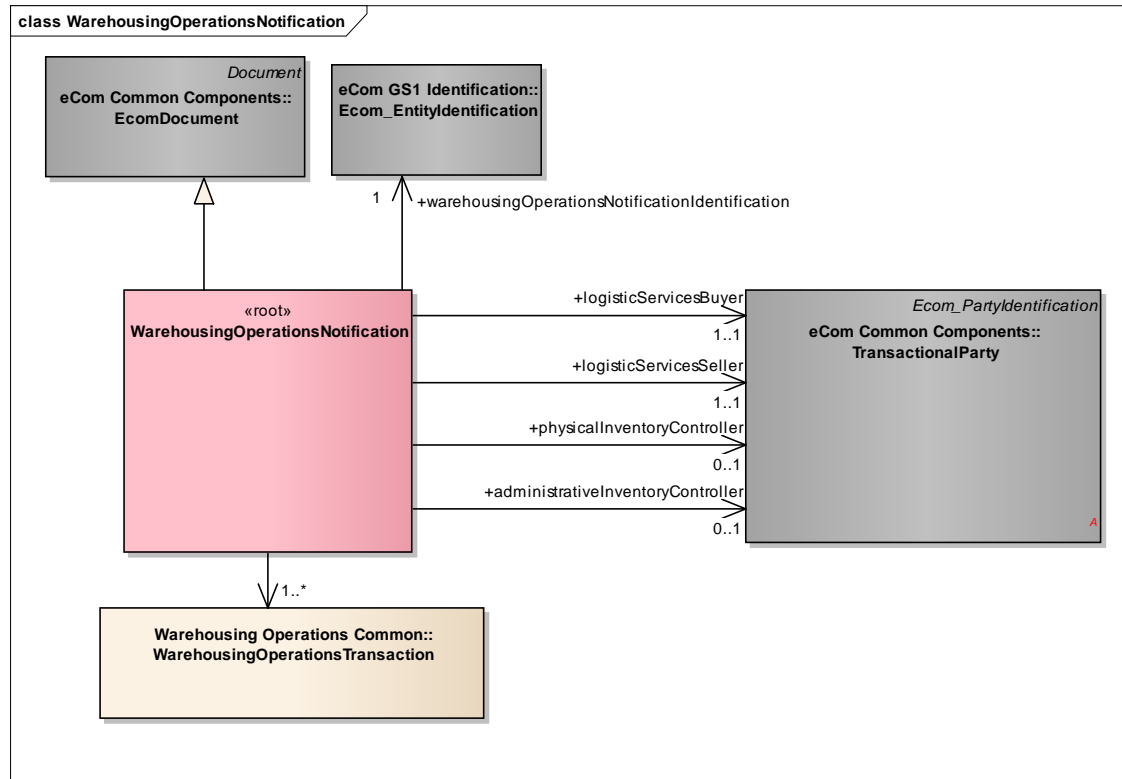
Content	Attribute / Role	Datatype / Secondaryclass	Multiplicity	Definition	Requirements
WarehousingOperationsInstruction				Message that supports the inventory management process, and enables a Logistic Services Client (LSC) to inform his Logistic Services Provider (LSP) that the inventory status of goods needs to be changed.	
Association	administrativeInventoryController	TransactionalParty	0..1	A party responsible for the control, accounting and reporting of inventory.	[brad-wim:iopins-5]
Association		WarehousingOperationsTransaction	1..*	Transactions specifying the required changes to the inventory status.	
Association	logisticServicesBuyer	TransactionalParty	1..1	A party that purchases logistics services from another party.	[brad-wim:iopins-2]
Association	logisticServicesSeller	TransactionalParty	1..1	A party that provides logistics services to another party.	[brad-wim:iopins-3]
Association	warehousingOperationsInstructionIdentification	Ecom_EntityIdentification	1..1	The identification of the warehousing operations instruction document.	[brad-wim:iopins-1] WR 15-000314
Generalization		EcomDocument		Basic information about the content of the message including version number, creation date and time.	WR 14-000110
Association	physicalInventoryController	TransactionalParty	0..1	A party responsible for storing of goods and related (physical) inventory operations.	[brad-wim:iopins-4]



**Note:** Reference Shared Common Library Business Message (BMS) Release 3.6 and eCom Domain Common Library Business Message (BMS) Release 3.6 for all common information.

## 4.2 Warehousing Operations Notification

### Class diagram



### GDD Report

The content of the WarehousingOperationsNotification class, its structure and component definitions can be accessed in the Global Data Dictionary: [http://apps.gs1.org/GDD/bms/Version3\\_4/Pages/bieDetails.aspx?semanticURN=urn:gs1:gdd:bie:WarehousingOperationsNotification](http://apps.gs1.org/GDD/bms/Version3_4/Pages/bieDetails.aspx?semanticURN=urn:gs1:gdd:bie:WarehousingOperationsNotification)



Content	Attribute / Role	Datatype / Secondaryclass	Multiplicity	Definition	Requirements
WarehousingOperationsNotification				Message that supports the inventory management process, and enables a Logistic Services Provider (LSP) to inform his Logistic Services Client (LSC) that the inventory status of goods has been changed.	
Association	logisticServicesBuyer	TransactionalParty	1..1	A party that purchases logistics services from another party.	[brad-wim:iopins-2]
Association	physicalInventoryController	TransactionalParty	0..1	A party responsible for storing of goods and related (physical) inventory operations.	[brad-wim:iopins-4]
Generalization		EcomDocument		Basic information about the content of the message including version number, creation date and time.	WR 14-000110
Association	warehousingOperationsNotificationIdentification	Ecom_EntityIdentification	1..1	The identification of the warehousing operations notification document.	[brad-wim:iopinn-1] WR 15-000314
Association	administrativeInventoryController	TransactionalParty	0..1	A party responsible for the control, accounting and reporting of inventory.	[brad-wim:iopins-5]
Association		WarehousingOperationsTransaction	1..*	Transactions specifying the changes to the inventory status.	
Association	logisticServicesSeller	TransactionalParty	1..1	A party that provides logistics services to another party.	[brad-wim:iopins-3]

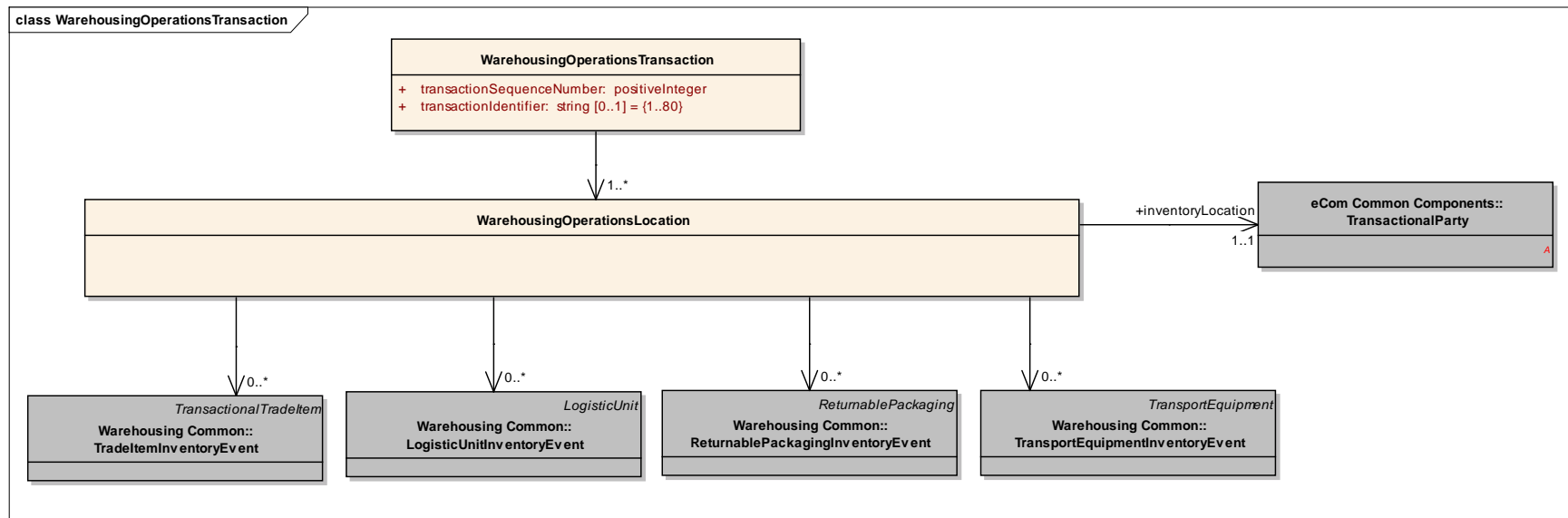


**Note:** Reference Shared Common Library Business Message (BMS) Release 3.6 and eCom Domain Common Library Business Message (BMS) Release 3.6 for all common information.

## 4.3 Warehousing Operations Common – Transaction

### 4.3.1 Warehousing Operations Common – WarehousingOperationsTransaction

#### Class Diagram



#### GDD Report

The content of the WarehousingOperationsTransaction class, its structure and component definitions can be accessed in the Global Data Dictionary: [http://apps.gs1.org/GDD/bms/Version3\\_4/Pages/bieDetails.aspx?semanticURN=urn:gs1:gdd:bie:WarehousingOperationsTransaction](http://apps.gs1.org/GDD/bms/Version3_4/Pages/bieDetails.aspx?semanticURN=urn:gs1:gdd:bie:WarehousingOperationsTransaction)

Content	Attribute / Role	Datatype / Secondaryclass	Multiplicity	Definition	Requirements
WarehousingOperationsTransaction				A set of inventory updates that need to be carried out together for the transaction to complete successfully.	[brad-wim:iopins-6]
Association		WarehousingOperationsLocation	1..*	Details on the inventory events for this transaction, organized by inventory location.	



Content	Attribute / Role	Datatype / Secondaryclass	Multiplicity	Definition	Requirements
Attribute	transactionSequenceNumber	positiveInteger	1..1	Number that prescribes the sequence in which the transactions included in the message need to be processed.	[brad-wim:iopins-6.2]
Attribute	transactionIdentifier	string	0..1	Identifier of the transaction to be used for reference purposes.	[brad-wim:iopins-6.1]
WarehousingOperationsLocation				Details on the inventory events for this transaction, organized by inventory location.	
Association		TradeItemInventoryEvent	0..*	Information specifying an inventory activity of one or more trade items (of the same type) at a specific sub-location at a specific point in time.	[brad-wim:iopins-6.3.2, 6.3.3, 6.3.6, 6.3.8, 6.3.9, 6.3.10, 6.3.11]]
Association	inventoryLocation	TransactionalParty	1..1	The inventory location related to the included inventory events.	[brad-wim:iopins-6.3.4]
Association		LogisticUnitInventoryEvent	0..*	Information specifying an inventory activity of a specific logistic unit at a specific sub-location at a specific point in time.	[brad-wim:iopins-6.3.7]
Association		TransportEquipmentInventoryEvent	0..*	Information specifying an inventory activity of one or more pieces of transport equipment (of the same type) at a specific sub-location at a specific point in time.	
Association		ReturnablePackagingInventoryEvent	0..*	Information specifying an inventory activity of one or more returnable packaging items (of the same type) at a specific sub-location at a specific point in time.	

#### 4.4 Enumerations (message specific)

Not applicable

#### 4.5 Code Lists

Not applicable

## 5 Business Message Examples

### 5.1 Example 1

#### Warehousing Operations Instruction

Instruction by the administrative inventory controller to change the customs status of item 01111111001110, location AB-1, from BONDED to FREE\_CIRCULATION.

Attribute	Value
<b>WarehousingOperationsInstruction</b>	
creationDateTime	2012-07-11T12:15:00
documentStatusCode	ORIGINAL
documentActionCode	ADD
EntityIdentification (+warehousingOperationsInstructionIdentification)	Document ID: INOPI00123
TransactionalParty (+logisticServicesBuyer)	gln: 2222222000004
TransactionalParty (+logisticServicesSeller)	gln: 3333333000001
TransactionalParty (+administrativeInventoryController)	gln: 2222222000004
TransactionalParty (+physicalInventoryController)	gln: 3333333000001
<b>WarehousingOperationsTransaction</b>	
transactionSequenceNumber	1
transactionIdentifier	INOPI00123-1
<b>WarehousingOperationsLocation</b>	
<b>TransactionalParty (+inventoryLocation)</b>	
gln	3333333000018
<b>TradeItemInventoryEvent</b>	
gtin	01111111001110
tradeItemQuantity	200
eventIdentifier	1
inventoryBusinessStepCode	status_changing
inventoryDispositionCode	sellable_accessible



Attribute	Value
inventoryMovementTypeCode	DECREASE
<b>InventorySubLocation (+)</b>	
glnExtension	AB-1
<b>AdministrativeUnit (+)</b>	
administrativeUnitTypeCode	OPERATING_UNIT
internalAdministrativeUnitIdentification	123-E
<b>InventoryDutyFeeTaxStatus (+)</b>	
dutyFeeTaxTypeCode	IMP
customsWarehouseStatusCode	BONDED
<b>TradeItemInventoryEvent</b>	
gtin	01111111001110
tradeItemQuantity	200
eventIdentifier	2
inventoryBusinessStepCode	STATUS_CHANGING
inventoryDispositionCode	SELLABLE_ACCESSIBLE
inventoryMovementTypeCode	INCREASE
<b>InventorySubLocation (+)</b>	
glnExtension	AB-1
<b>AdministrativeUnit (+)</b>	
administrativeUnitTypeCode	OPERATING_UNIT
internalAdministrativeUnitIdentification	123-NE
<b>InventoryDutyFeeTaxStatus (+)</b>	
dutyFeeTaxTypeCode	IMP
customsWarehouseStatusCode	FREE_CIRCULATION

## 5.2 Example 2

### Warehousing Operations Notification

Notification by the physical inventory controller on the damaging of 1 unit of item 01111111001110, location AB-1, customs status BONDED.

Element	Value
WarehousingOperationsNotification	creationDateTime: 2012-07-11T12:15:00 documentStatusCode: ORIGINAL documentActionCode: ADD
EntityIdentification (+warehousingOperationsNotificationIdentification)	Document ID: INOPN54031
TransactionalParty (+administrativeInventoryController)	gln: 2222222000004
TransactionalParty (+physicalInventoryController)	gln: 3333333000001



Element	Value
TransactionalParty (+logisticServicesSeller)	gln: 2222222000004
TransactionalParty (+logisticServicesBuyer)	gln: 3333333000001
WarehousingOperationsTransaction	transactionSequenceNumber 1 transactionIdentifier INOPN54031-1
WarehousingOperationsLocation	
- TransactionalParty (+inventoryLocation)	gln: 3333333000018
TradeItemInventoryEvent	gtin: 01111111001110 tradeItemQuantity: 1 eventIdentifier: 2 inventoryBusinessStepCode: status_changing inventoryDispositionCode: sellable_accessible inventoryMovementTypeCode: DECREASE
- InventorySubLocation (+)	glnExtension: AB-1
- AdministrativeUnit (+)	administrativeUnitTypeCode: OPERATING_UNIT internalAdministrativeUnitIdentification: 123-E
- InventoryDutyFeeTaxStatus (+)	dutyFeeTaxTypeCode = IMP customsWarehouseStatusCode: BONDED
TradeItemInventoryEvent	gtin: 01111111001110 tradeItemQuantity: 1 eventIdentifier: 2 inventoryBusinessStepCode: status_changing inventoryDispositionCode: non_sellable_damaged inventoryMovementTypeCode: INCREASE
- InventorySubLocation (+)	glnExtension: AB-1
- AdministrativeUnit (+)	administrativeUnitTypeCode: OPERATING_UNIT internalAdministrativeUnitIdentification: 123-E
- InventoryDutyFeeTaxStatus (+)	dutyFeeTaxTypeCode = IMP customsWarehouseStatusCode: BONDED

## 6 Implementation Considerations

### 6.1 User Guide

The Functional User Guide contains more information about the structure and content of the Warehousing Operations Instruction and Notification message:

[http://www.gs1.org/docs/ecom/xml/3/3.4/eCom-Trade\\_messages.html#WarehousingOperationsInstructionandNotification](http://www.gs1.org/docs/ecom/xml/3/3.4/eCom-Trade_messages.html#WarehousingOperationsInstructionandNotification)

### 6.2 Message Specific Considerations

Not applicable

## 7 Summary of Changes

Any change in the GS1 standards is done based on the Work Request (WR) submitted by the GS1 User Companies or Member Organisations. All Work Requests are documented in the Work Request system available on the GS1 website: <http://wr.gs1.org>. The system is accessible to registered users. New visitors need to register first, to be able to access it. WRs can be searched by the number referenced in tables below, see: Search Work Requests. The number starts with the two last digits of the year when it was submitted, followed by the consecutive number within that year.



**Note:** WRs submitted earlier than February 2012 should be searched in Old Change Requests.

### 7.1 BMS Release 3.1

First publication

### 7.2 BMS Release 3.2

Change	Associated WR
<p>Added Attribute Value Pair at the root, line item and sub line item levels</p> <div style="border: 1px solid black; padding: 5px;"> <p>class WarehousingOperationsInstruction - maintenance view</p> <div style="border: 1px solid black; padding: 5px; margin: 5px 0;"> <p style="text-align: center;">«root» <b>WarehousingOperationsInstruction</b></p> <p style="text-align: center;"><i>maintenance</i></p> <p>Defect: (New) 3.2 changed generalisation from Document to eComDocument class to include AVP (WR 14-110)</p> </div> </div>	<p><b>14-000110</b></p>
<p>Added Attribute Value Pair at the root, line item and sub line item levels</p> <div style="border: 1px solid black; padding: 5px;"> <p>class WarehousingOperationsNotification - maintenance view</p> <div style="border: 1px solid black; padding: 5px; margin: 5px 0;"> <p style="text-align: center;">«root» <b>WarehousingOperationsNotification</b></p> <p style="text-align: center;"><i>maintenance</i></p> <p>Defect: (New) 3.2 changed generalisation from Document to eComDocument class to include AVP (WR 14-110)</p> </div> </div>	<p><b>14-000110</b></p>

### 7.3 BMS Release 3.3

Change	Associated WR
<p>Created Ecom_EntityIdentification class and changed association from the previous EntityIdentification</p> <pre> class WarehousingOperationsInstruction - maintenance view     classDiagram         class Ecom_EntityIdentification {             maintenance         }         class WarehousingOperationsInstruction {             &lt;&lt;root&gt;&gt;             maintenance         }         WarehousingOperationsInstruction "1" -- "*" Ecom_EntityIdentification : +warehousingOperationsInstructionIdentification     </pre> <p>Change: (Complete) 3.2 changed generalisation from Document to eComDocument class to include AVP (WR 14-110)  Change: (New) 3.3 changed association from EntityIdentification to Ecom_EntityIdentification (WR 15-314)</p>	<p><b>15-000314</b>  Make GS1 identification keys optional in GS1 EDI XML</p>
<p>Created Ecom_EntityIdentification class and changed association from the previous EntityIdentification</p> <pre> class WarehousingOperationsNotification - maintenance view     classDiagram         class Ecom_EntityIdentification {             maintenance         }         class WarehousingOperationsNotification {             &lt;&lt;root&gt;&gt;             maintenance         }         WarehousingOperationsNotification "1" -- "*" Ecom_EntityIdentification : +warehousingOperationsNotificationIdentification     </pre> <p>Change: (Complete) 3.2 changed generalisation from Document to eComDocument class to include AVP (WR 14-110)  Change: (New) 3.3 changed association from EntityIdentification to Ecom_EntityIdentification (WR 15-314)</p>	<p><b>15-000314</b>  Make GS1 identification keys optional in GS1 EDI XML</p>

### 7.4 BMS Release 3.4

No work requests. Indirect changes due to upgrade to new Shared and eCom Common libraries.

### 7.5 BMS Release 3.5

No work requests. Indirect changes due to upgrade to new Shared and eCom Common libraries.

### 7.6 BMS Release 3.5.1

No work requests. Indirect changes due to upgrade to new Shared and eCom Common libraries.

### 7.7 BMS Release 3.6

No work requests. Indirect changes due to upgrade to new Shared and eCom Common libraries.

## 8 Appendices

Not Applicable

## 9 Acknowledgements

### 9.1.1 Work Group

Function	Name	Company / organisation
Co-chair	Rossner (Pottier), Natascha	GS1 France
Co-chair	Schmidt, Tom Eric	August Storck KG
Member	Bemrose, Jonathan	R&R Ice Cream
Member	Bodemer, Petra	dm-drogerie markt GmbH + Co. KG
Member	Boikanyo, Rebone	GS1 South Africa / Consumer Goods Council of South Africa
Member	Canada, ON	M3B 3L1
Member	Carlson, Jim	General Mills, Inc.
Member	Chresta, Richard	GS1 Switzerland
Member	Cook, Don	Wal-Mart Stores, Inc.
Member	Cox, Marc	Philips Electronics N.V.
Member	Darnell, David	Systrends
Member	De Flou, Nele	GS1 Belgium & Luxembourg
Member	Dicks, Arne	GS1 Germany
Member	Duvinger, Karina	GS1 Sweden
Member	Foerderer, Klaus	GS1 Germany
Member	Gathmann, Stefan	GS1 Ireland
Member	Grangard, Anders	GS1 Global Office
Member	Harpell, Eileen	GS1 Community Room Staff
Member	Hand, Phil	JDA Software
Member	Herregodts, Kurt	GS1 Belgium & Luxembourg
Member	Kempkes, Fred	Unilever N.V.
Member	Kernan, Brendan	GS1 Ireland
Member	Kidd, Robin	Nestle
Member	Krid, Anne-Claire	GS1 France
Member	Lanoue, Tom	General Mills, Inc.
Member	Laur, Rita	GS1 Canada
Member	Lenman, Mia	GS1 Sweden
Member	Lerch, Hanjoerg	METRO Group
Member	Moberg, Dale	Axway
Member	Montes de Oca, Alejandra	GS1 Mexico
Member	Ng, Ella	GS1 Australia
Member	Peelen, Esther	GS1 Netherlands
Member	Pelekies, Andreas	GS1 Germany

Function	Name	Company / organisation
Member	Perrier, Patricia	GS1 France
Member	Przybilla, Christian	GS1 Germany
Member	Pujol, Xavier	GS1 Spain
Member	Racek, Greg	Wal-Mart Stores, Inc.
Member	Repetto, Mirko	GS1 Italy
Member	Robba, Steven	1WorldSync Holdings, Inc.
Member	Rosell, Pere	GS1 Spain
Member	Rosenberg, Steven	GS1 US
Member	Schmid, Sue	GS1 Australia
Member	Schneider, Christian	GS1 Switzerland
Member	Sehorz, Eugen	GS1 Austria
Member	Sharma, Vishal	General Mills, Inc.
Member	Shimazaki, Ayako	GS1 Japan
Member	Sion, Emilie	GS1 France
Member	Souza, Nadia	GS1 Brasil
Member	Strand, Roman	GS1 Germany
Member	Tan, Milton	GS1 Malaysia
Member	Tompsett, Simon	Waitrose
Member	Trelle, Ute	1WorldSync Holdings, Inc.
Member	Tse, Steve	GS1 Hong Kong
Member	Tyson, Betty	Knouse Foods Cooperative, Inc
Member	Van den Bergh, Senne	GS1 Belgium & Luxembourg
Member	Van der Eijk, Pim	OASIS - Sonnenglanz Consulting BV
Member	Veldhuis, Saskia	Procter & Gamble Co.
Member	Welch, Shan	GS1 UK
Member	Westerkamp, Jan	GS1 Netherlands
Member	Wilson, Mary	GS1 US
Member	Windsperger, Bekki	Best Buy Co., Inc.
Member	Yang, Shaopeng	GS1 China
Member	Yusdiar, Dani	GS1 Indonesia
Member	Zwanziger, Greg	SUPERVALU

### 9.1.2 Development Team Members

Function	Name	Organisation
GSMP Process Lead	David Buckley	GS1 Global Office
Technical Development Lead	Miklos Bolyky	GS1 Global Office
Peer Review	Mark Van Eeghem	GS1 Global Office

